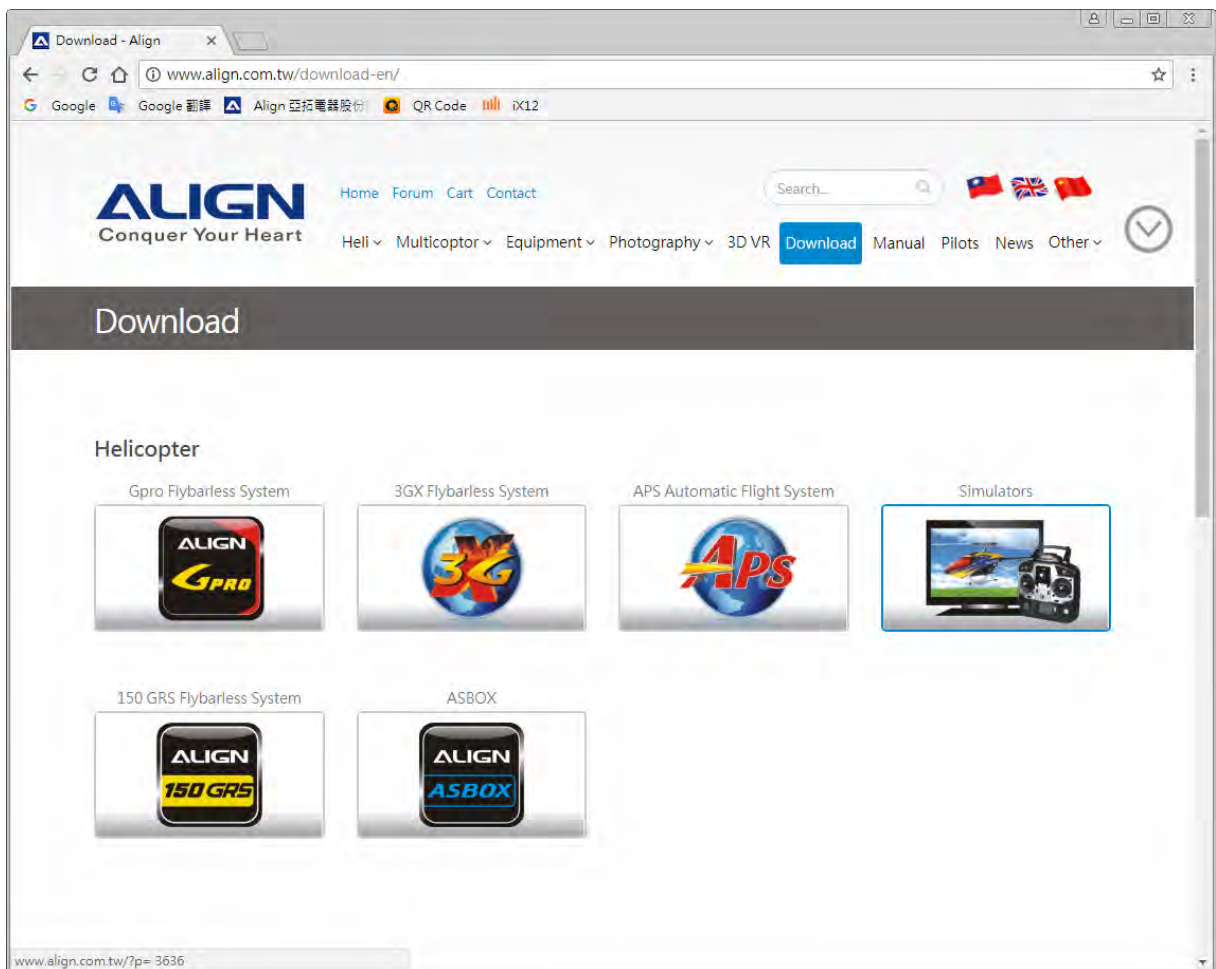


A10 Transmitter FMS Simulator Installation and Instruction

A10 遙控器搭配 FMS 飛行模擬程式 安裝及使用教學

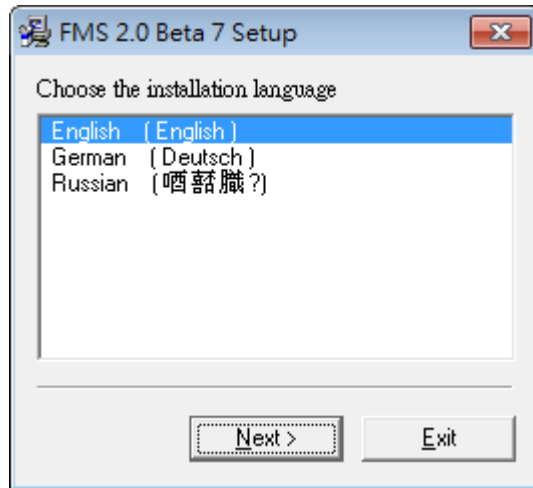
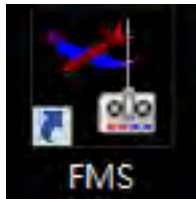
一、 Download and install FMS Simulator 下載安裝 FMS 飛行模擬程式

1. Visit ALIGN Website <http://www.align.com.tw/> Upgrade Download → FMS Simulator → Choose Version 2.0 Beta 7 and start downloading
請至亞拓官網 / 升級下載 / 飛行模擬器 / 選擇 Version 2.0 Beta7 點按下載



2. After downloading, click "FMS Simulator" to start installation. Choose language "English/English" then click "Next".

下載完成後，點按『FMS 飛行模擬程式』安裝。請選擇『English (English)』語系，點選『Next >』進行下一步安裝。



3. Confirm and click "I agree with the above terms and conditions" then next.

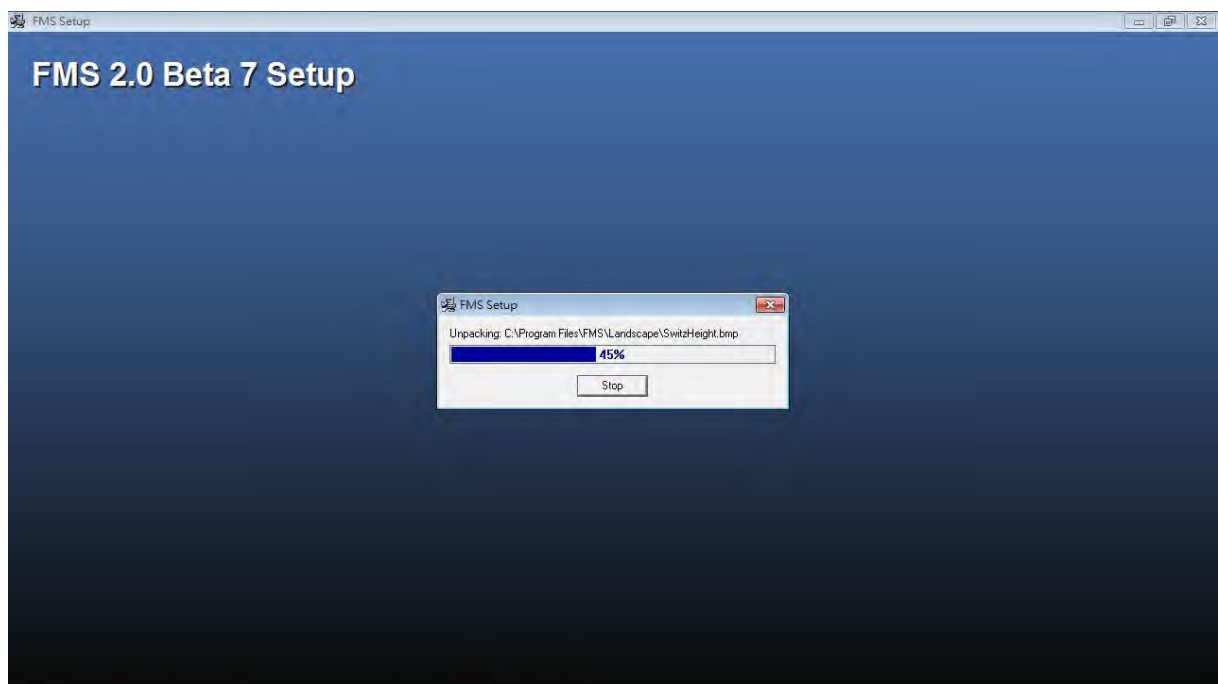
勾選『 I agree with the above terms and conditions』，點按『Next >』進行下一步安裝。



4. Choose the program folder then next.
選擇安裝路徑後，點按『Next >』，開始進行安裝。



5. FMS Simulator Installation Progress :
『FMS 飛行模擬程式』安裝進度百分比完成圖如下：



- Click "Finish" for completion. Program will enter in FMS Simulator automatically after installation.

安裝完成出現如下畫面，點按『Finish』結束安裝程式，程式會自動開啟進入 FMS 飛行模擬程式。



二、 Transmitter Setup 遙控器介面設定

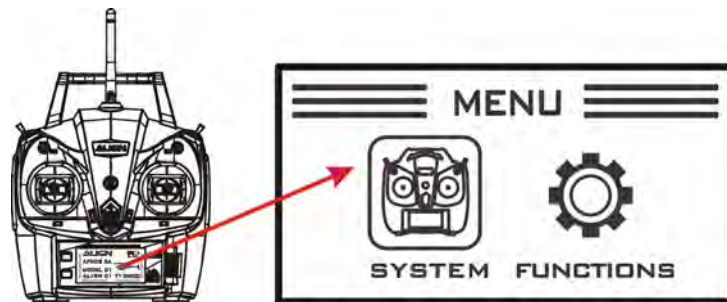
- Slide the A10 transmitter power button up to power on the radio till light up and ring. The "Home Page" shows useful information about the model including, hold down roller to enter the "Menu".

開啟 A10 遙控器，直到螢幕亮起，此時開機會有開機聲響。選單分為兩部分，系統設定和功能設定，滾輪下壓長按進入選單。



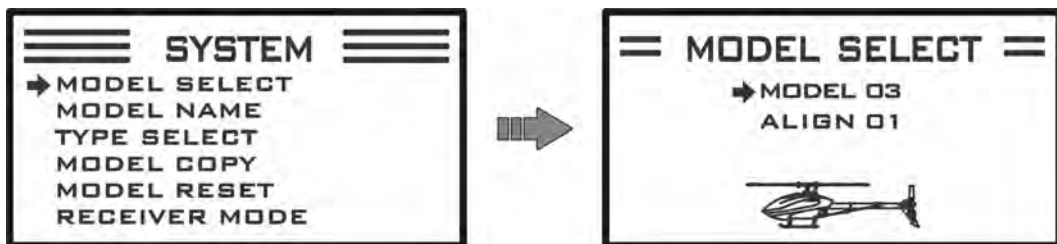
2. A check box to indicate it has been selected. Then enter "System Setup" page to set up a new model.

方框為已選取，進入『系統設定』頁面，在遙控器上建立一個新的模型。



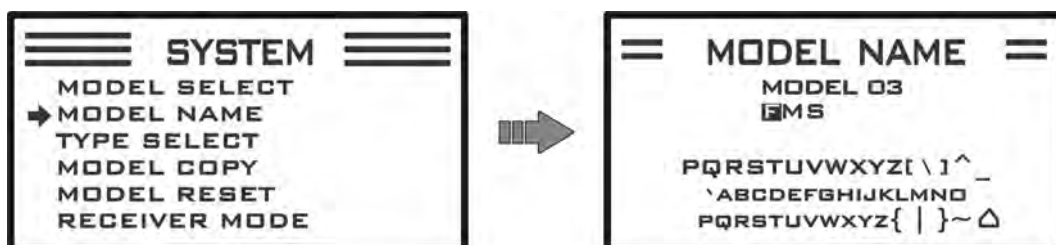
3. Click and enter in "Model Select" page to set up a new model.

點按『模型選擇』頁面，新增一款模型。

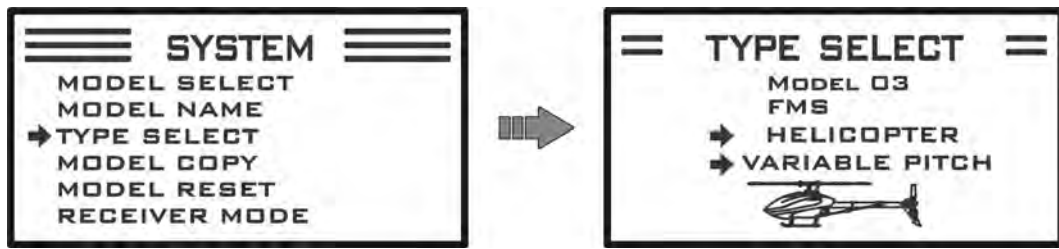


4. Click and enter in "Model Name" page to give it a name.

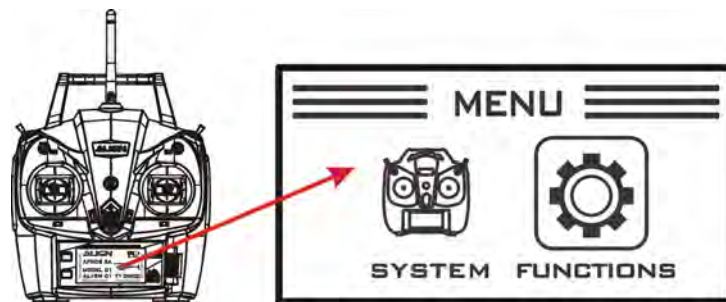
點按『模型命名』頁面，命名一個新的模型名稱。



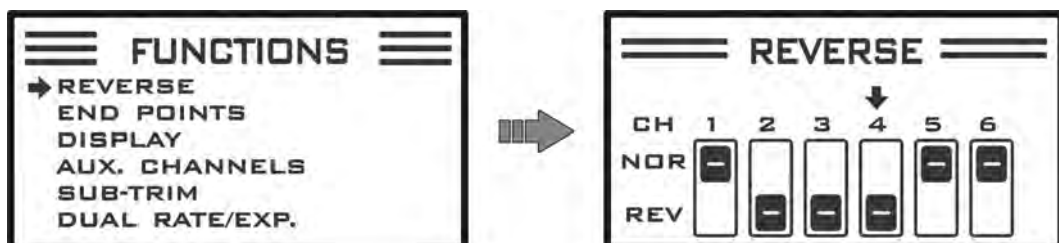
5. Click and enter in "Type Select" page to set up Variable Pitch.
 點按『模型類型』頁面，設定選擇直升機 VARIABLE PITCH。



6. Back to Transmitter menu. A check box to indicated it has been selected. Then enter in "Functions" page.
 回到遙控器選單介面，方框為已選取，進入『功能設定』選單。



7. Click and enter in "Reverse" page to set up reverse on servo channel 2,3,4.
 Then complete A10 transmitter setup.
 進入『正反向』設定伺服器，選擇 2、3、4 通道反向，A10 遙控器完成設定。



三、 FMS Simulator Connection 連接 FMS 模擬線

Connect FMS Simulator 4 PIN Cable to the back of radio and connect USB cable to computer after the radio's power is on.

請將 FMS 模擬線 4PIN 圓孔端接到 A10 遙控器背面的教練接口/更新接口，另一端連接至電腦 USB 埠。



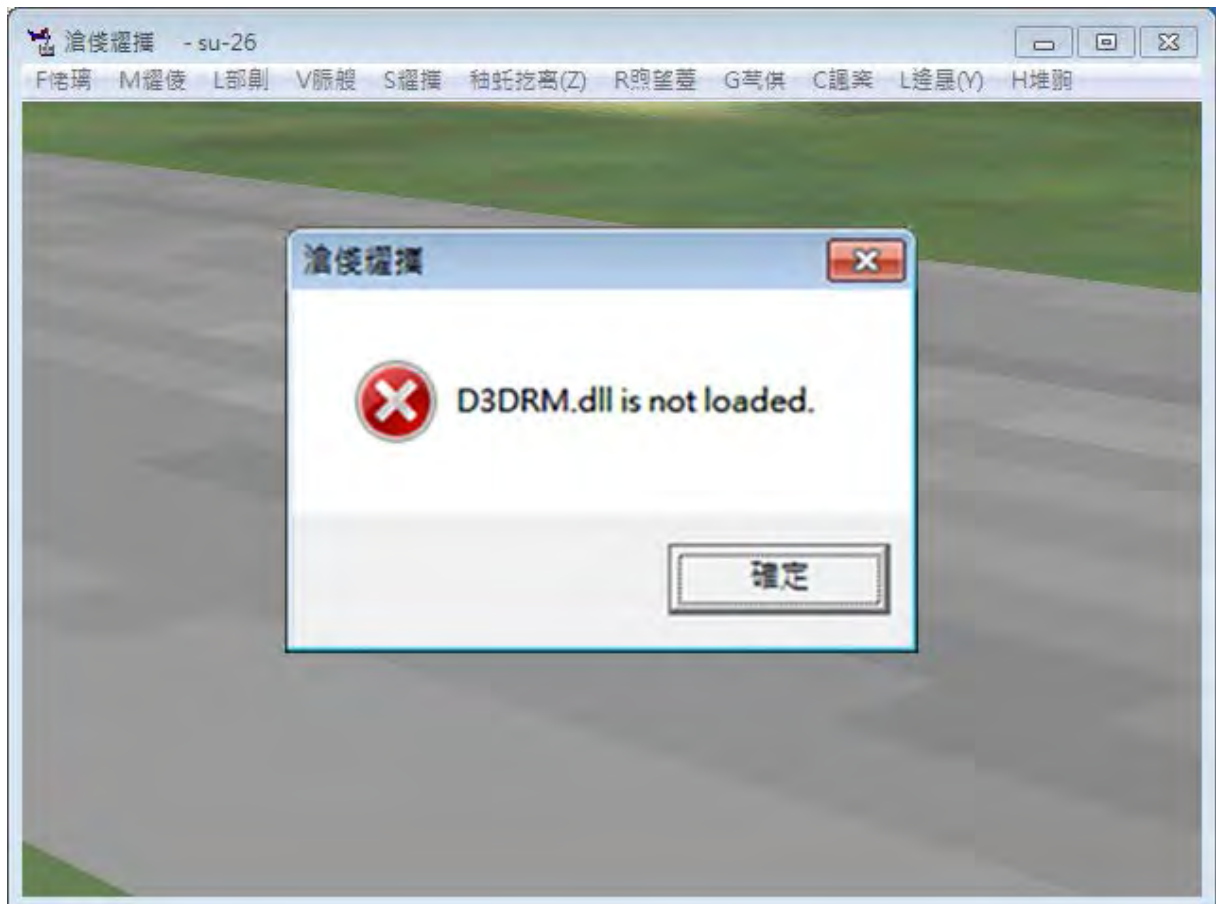
四、 Troubleshooting for FMS Simulator Installation 安裝 FMS 飛行模擬程式疑難排解

Problem to open FMS Simulator, please download visit d3drm.dll file from <http://www.align.com.tw/download/simulators/>.

在安裝 FMS 飛行模擬程式時，若遇到無法執行 FMS 飛行模擬程式的問題！請至下列網址下載 d3drm.dll 檔。

d3drm.dll 下載位址 <http://www.align.com.tw/download/simulators/>

1. After installation, if there is no "d3drm.dll" file in computer, the FMS Simulator will pop out a window of "d3drm.dll file is not loaded".
安裝完畢後，若電腦內沒有 D3DRM.dll，開啟 FMS 飛行模擬程式時就會跳出缺少 D3DRM.dll 的訊息。



2. After downloading "d3drm.dll" file, please move "d3drm.dll" file in either "C:\WINDOWS\System32" or "C:\WINDOWS\system" folder. Then open FMS Simulator.

把 D3DRM.dll 檔案放入 C:\WINDOWS\System32 目錄或把 D3DRM.dll 檔案放入 C:\WINDOWS\system 目錄。即可解決 FMS 飛行模擬程式無法開啓的問題。



五、 Language Setup 顯示語言設定

1. It shows gibberish in FMS Simulator system.
開啟 FMS 飛行模擬程式後，顯示畫面會出現亂碼文字。



2. Click "L 逢晟 (Y)" and select your own language from pull-down menu.
點按『L 逢晟 (Y)』後，出現下拉選單，選擇『English』語系，更改顯示語言。



六、FMS Simulator Setup FMS 飛行模擬程式設定

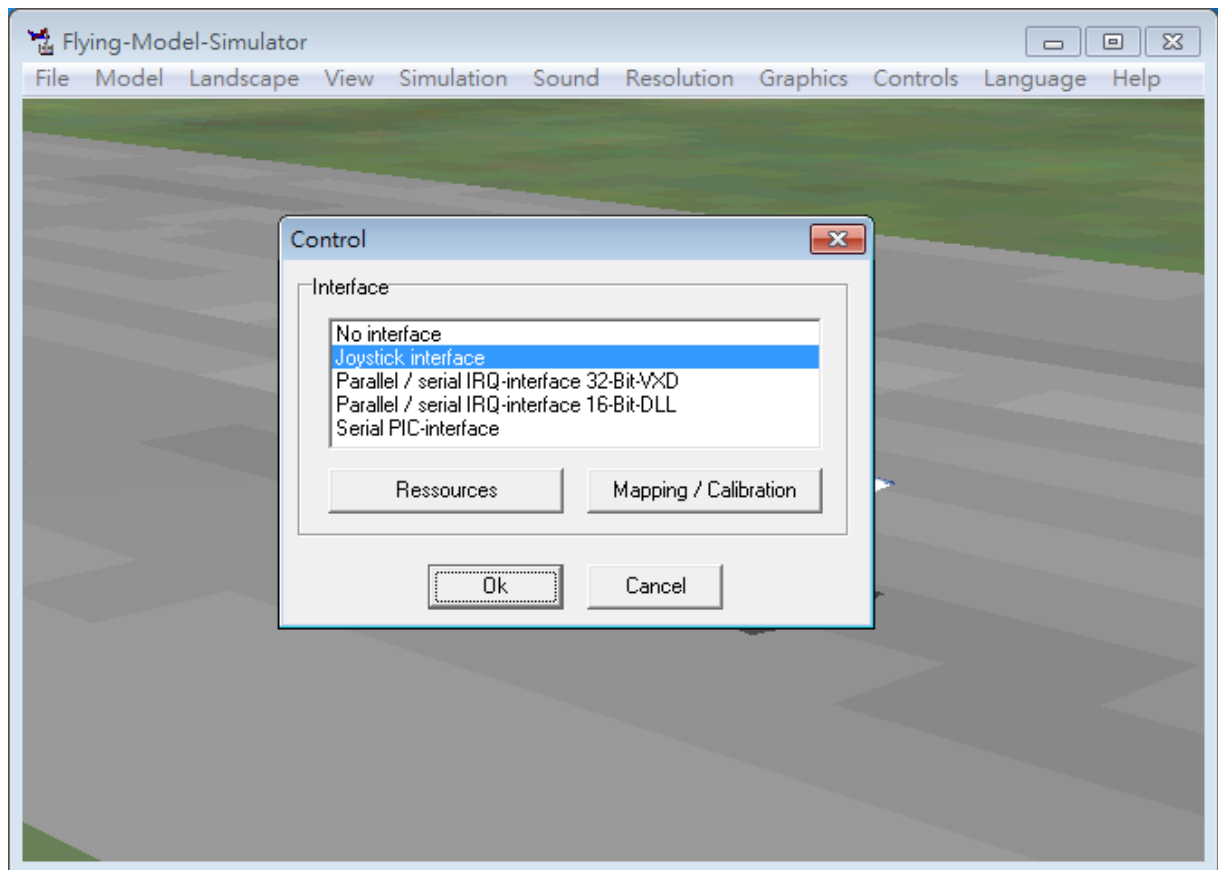
1. Click "Controls" and choose "Analog control" from pull-down menu to the next step.

點按『控制』後，出現下拉選單，選擇『類比控制(Z)』，進行下一步安裝。



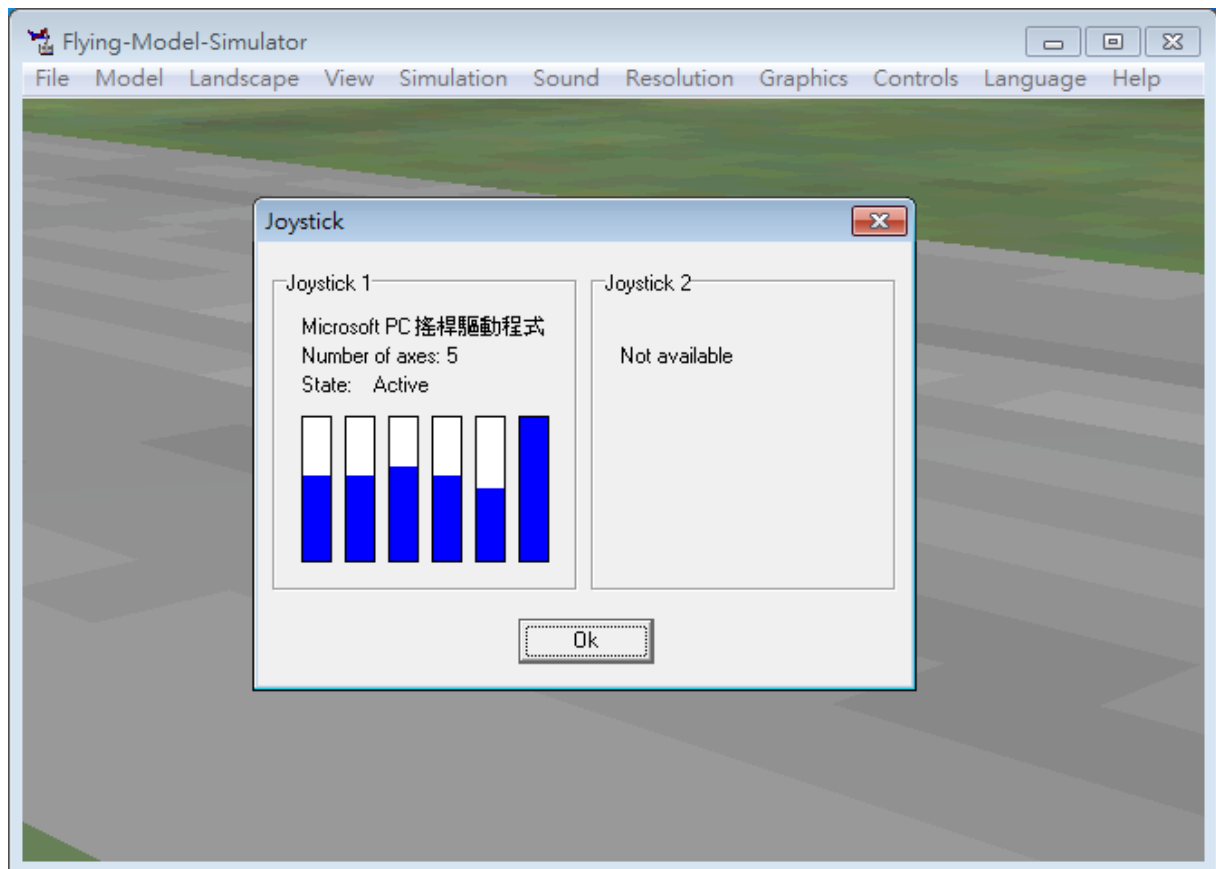
2. Click "Joystick interface" and select "Ressources" to the next step.

進入控制選單設定控制搖桿，點選『遊戲桿介面』，點選『資源』，進行下一步安裝。



3. Click "Ok" to the next. Make sure to connect FMS Simulator cable to A10 radio to read the parameter in the system.

點選『確定』，進行下一步安裝。若 FMS 模擬線沒有連接至 A10 遙控器，則無法讀取遙控器搖桿數值。



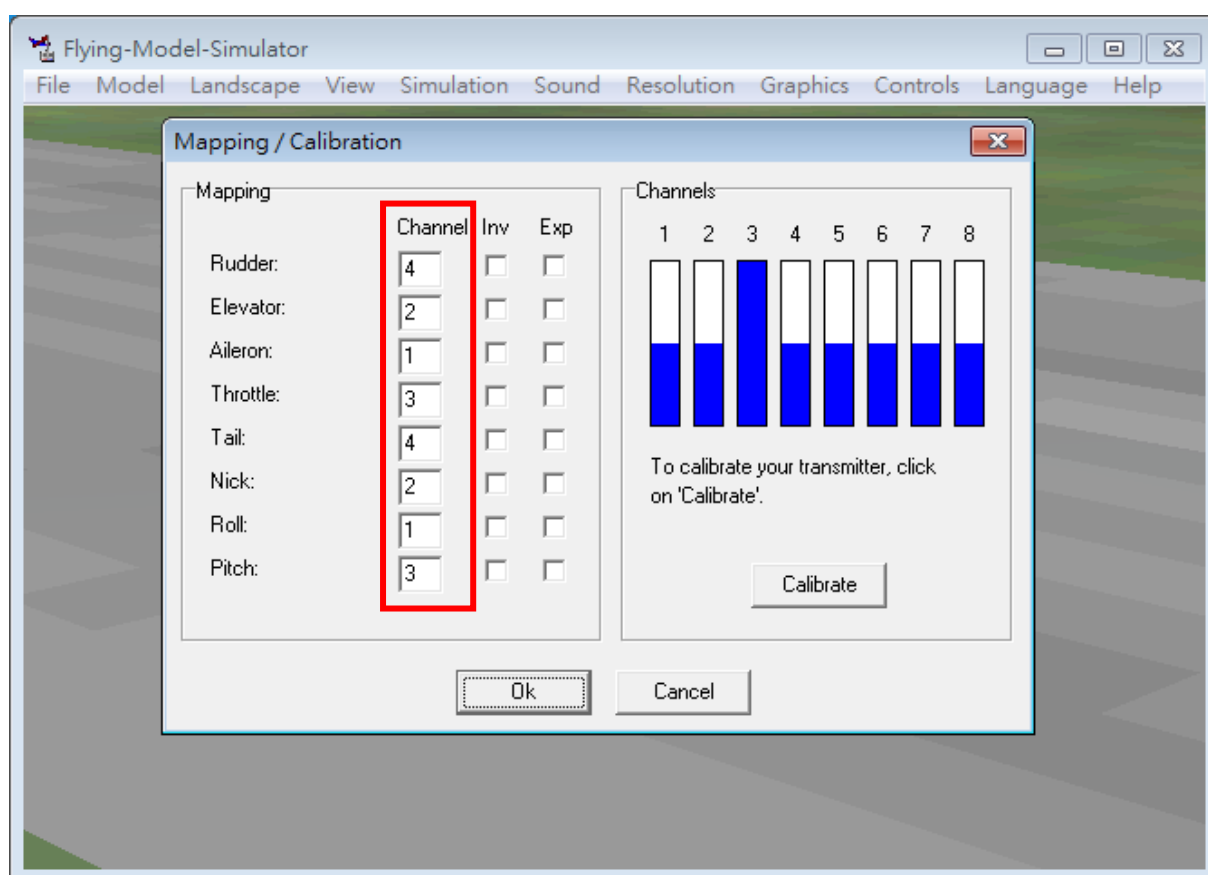
七、Stick Calibration 搖桿通道對應及校準

Please key in the number correspondingly in below channels.

設定各項通道對應如下畫面，請依紅色圈選內的設定值輸入至電腦。

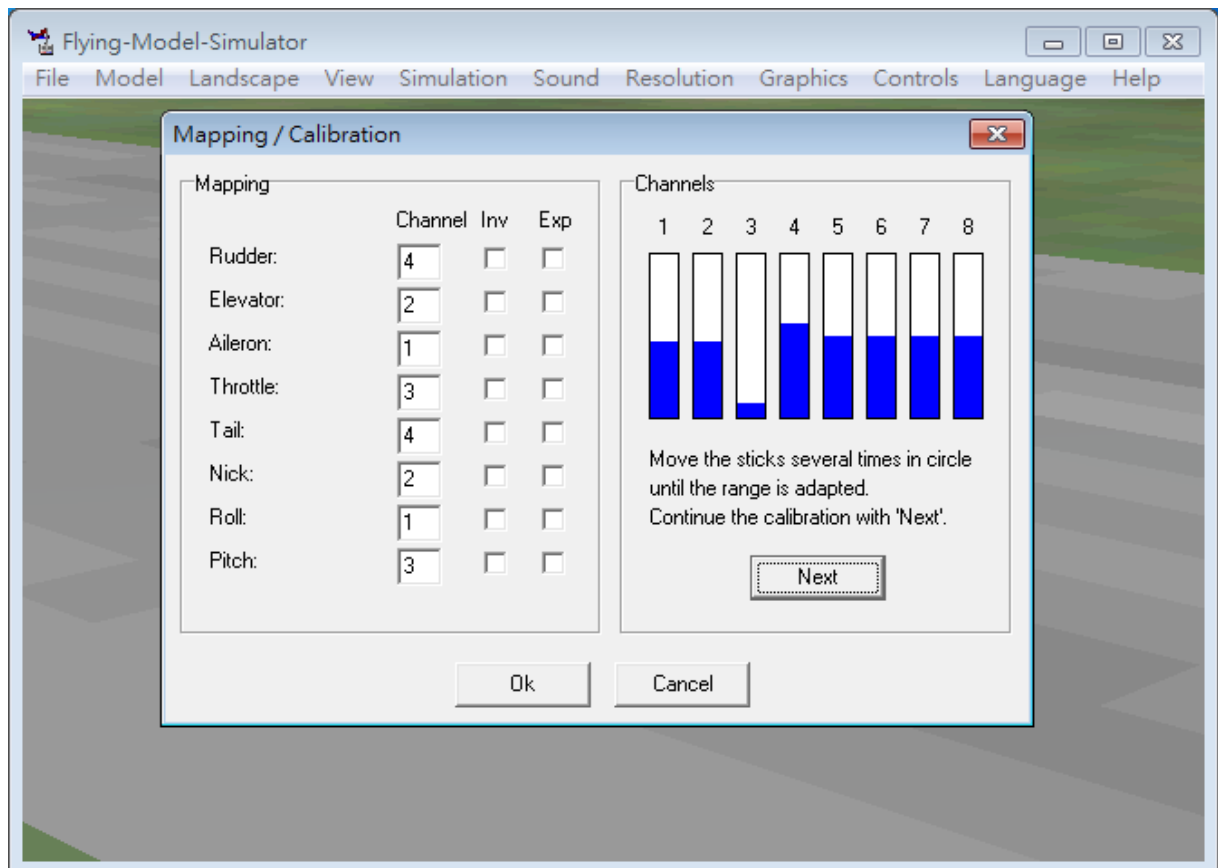
1. Click "Mapping/Calibration" then system will read the value accordingly by moving the stick. Then key in the number of 4-2-1-3-4-2-1-3 coorespondingly from top to the bottom. And click "Calibration" to the next.

點選『對應/校準』後，撥動搖桿讓 FMS 飛行模擬程式讀取遙控器搖桿數值，搖桿撥動完畢後，通道設定由上而下輸入 4-2-1-3-4-2-1-3 接著點選『Calibrate 校準』，進行下一步安裝。

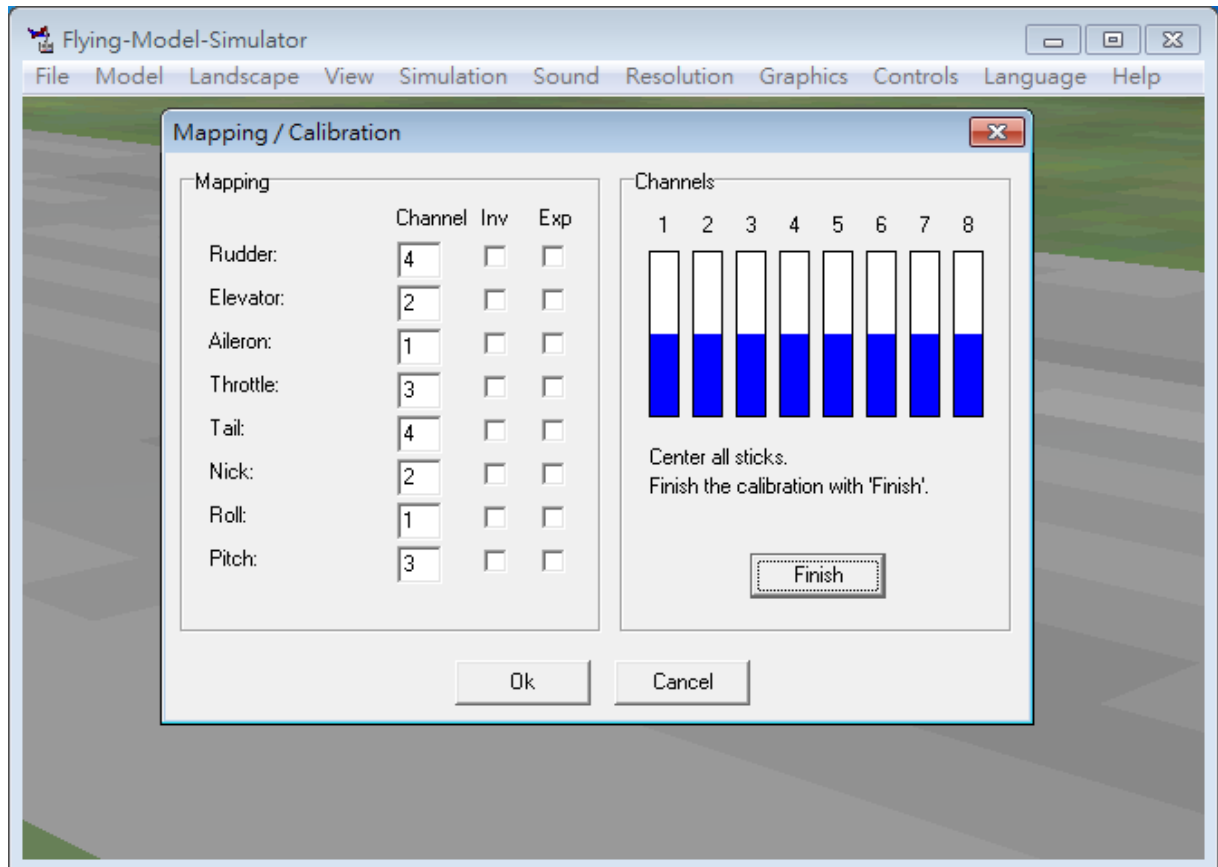


2. Move the stick to the max. & min. value for several times. Then click "Next" to the next.

確認移動撥桿數次直至涉及所有最大最小範圍，點按『下一步』，繼續校準。

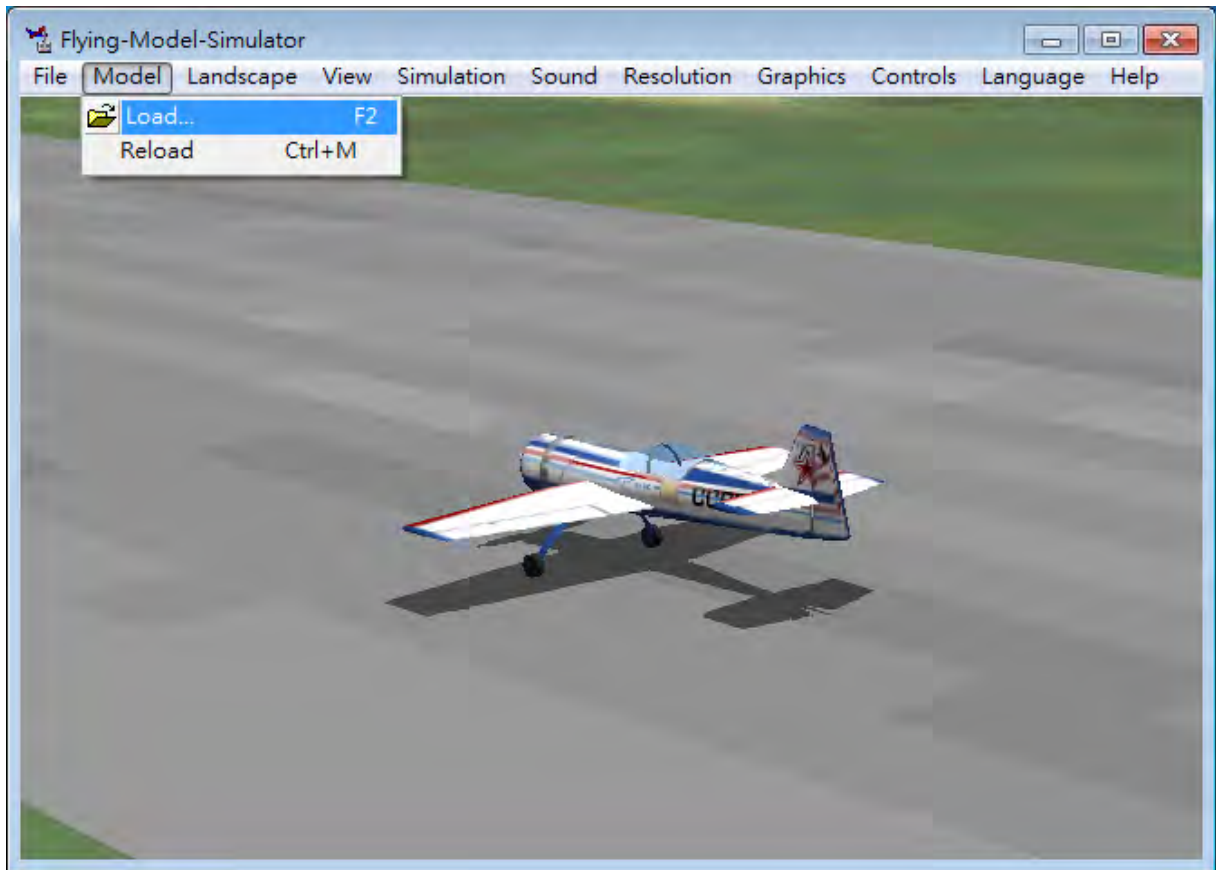


3. Move the stick to the center position, then click " Finish" for completion. Click "OK" to finish Mapping/Calibration.
請將所有撥桿位置置中後，點按『結束』結束校準；接著點選『確定』，完成 FMS 飛行模擬程式對應/校準設定。



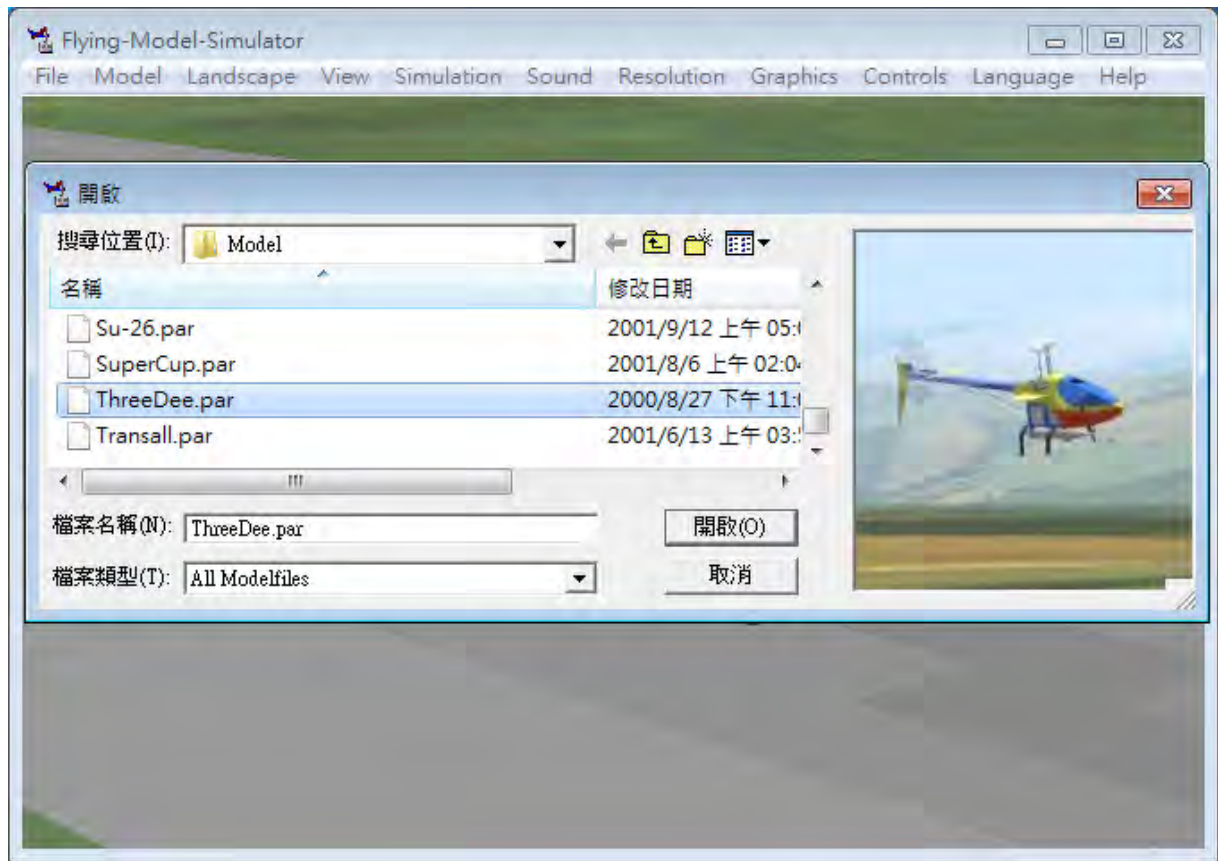
八、Load The Model and Background 載入模型及場景

1. Click "Model" and select "Load" from the pull-down menu to the next.
點按『模型』，出現下拉選單後點選『載入』，進行下一步安裝。



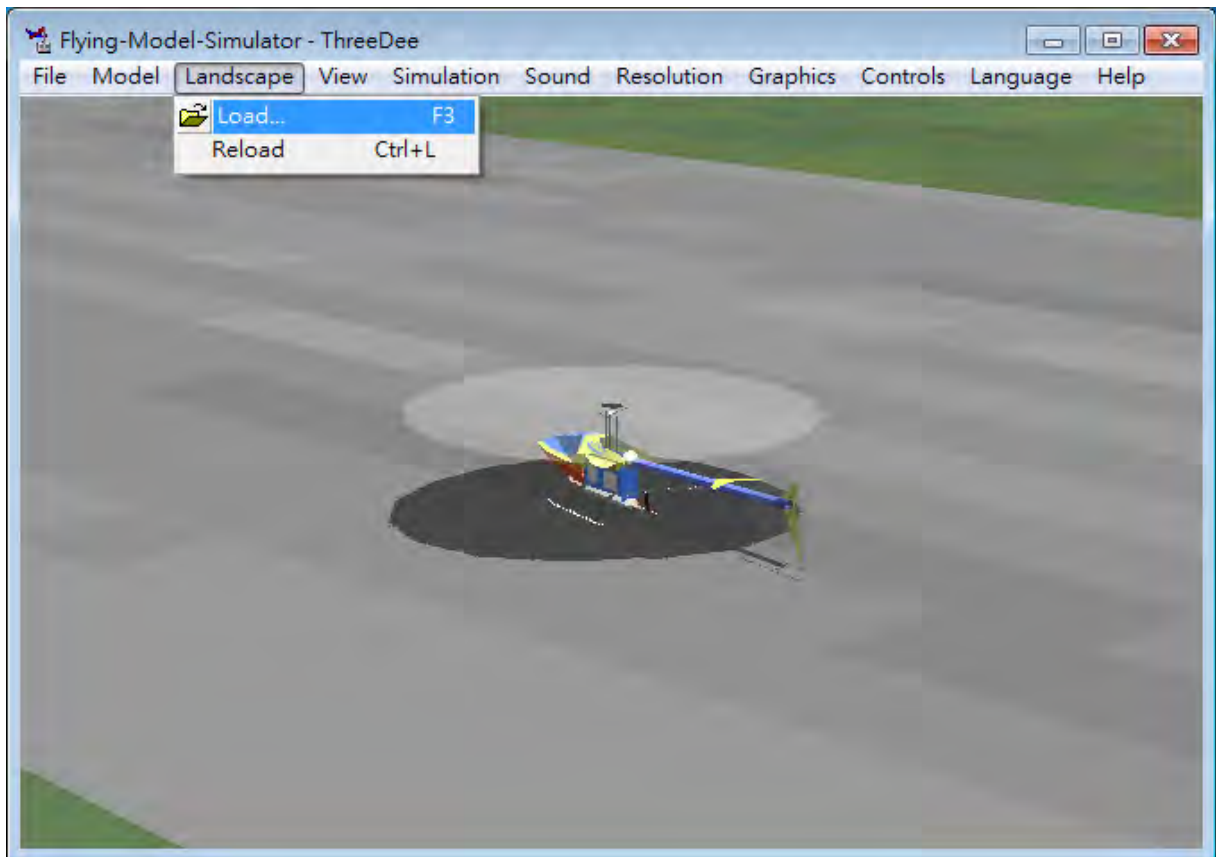
2. Click "ThreeDee.par" then click "Open" to load the model.

接著點選『ThreeDee.par』，點選『開啟』載入模型，進行下一步安裝。



3. After loading, start practicing in FMS Simulator. Allow to click "Landscape" to change the background.

載入模型後，開始進行 FMS 模擬飛行，若要更換飛行場景，可由『場景』選項進入更改設定。



4. Click "Landscape" and select "Load" from pull-down menu to change the background.

點按『場景』，出現下拉選單後點選『載入』，進入場景選項更改設定。

